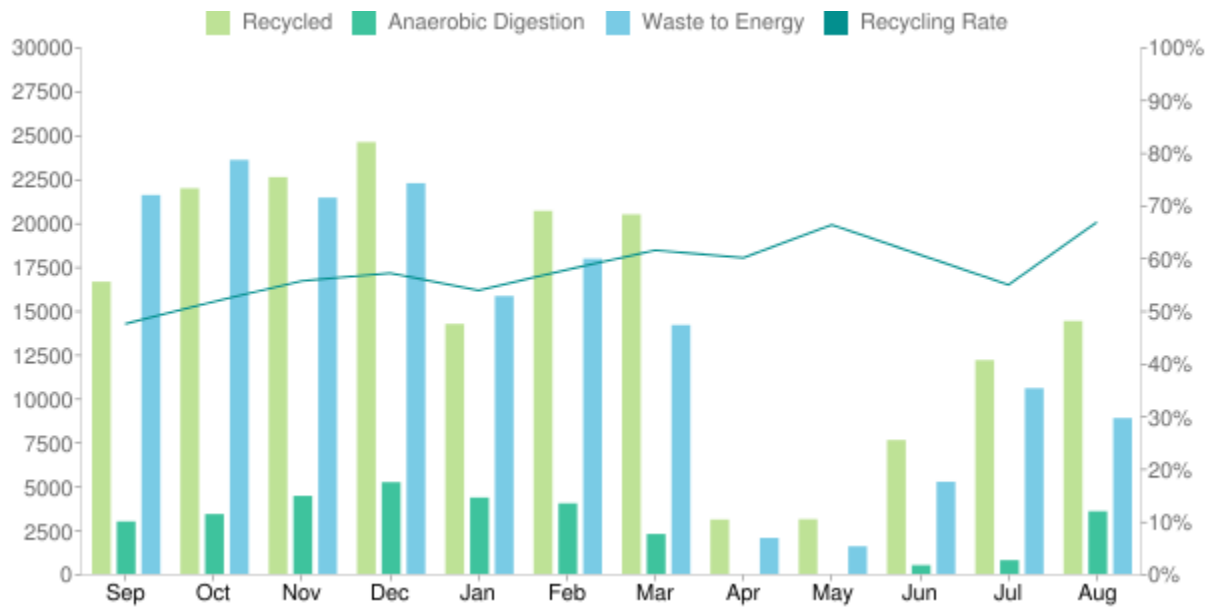


Material collected (kgs)

FROM SEPTEMBER 2019 TO AUGUST 2020



Month	Sep	Oct	Nov	Dec	Jan	Feb	Mar	Apr	May	Jun	Jul	Aug	Total
Recycled	16,640	21,960	22,595	24,590	14,235	20,675	20,475	3,100	3,119	7,625	12,175	14,405	181,594
Anaerobic Digestion	2,990	3,410	4,445	5,225	4,350	4,020	2,275	0	0	500	785	3,570	31,570
Waste to Energy	21,575	23,575	21,425	22,250	15,825	17,950	14,175	2,050	1,575	5,250	10,575	8,875	165,100
Recycling Rate	48%	52%	56%	57%	54%	58%	62%	60%	66%	61%	55%	67%	56%

Material recycled

FROM SEPTEMBER 2019 TO AUGUST 2020

CARDBOARD

44,000 kg

JUNK REMOVAL

600 kg

COFFEE GROUNDS

2,125 kg

MIXED RECYCLING

121,550 kg

FOOD RECYCLING

29,445 kg

PAPER SHREDDING

800 kg

GENERAL WASTE

164,700 kg

WEEE AND TONER

85 kg

GLASS

14,540 kg

Key statistics

	THIS MONTH	PAST 12 MONTHS
TREES SAVED:	110	1,376
CO ₂ TONNES SAVED:	19	242
KWH ENERGY PRODUCED:	8,017	103,711
RECYCLING RATE:	67%	56%