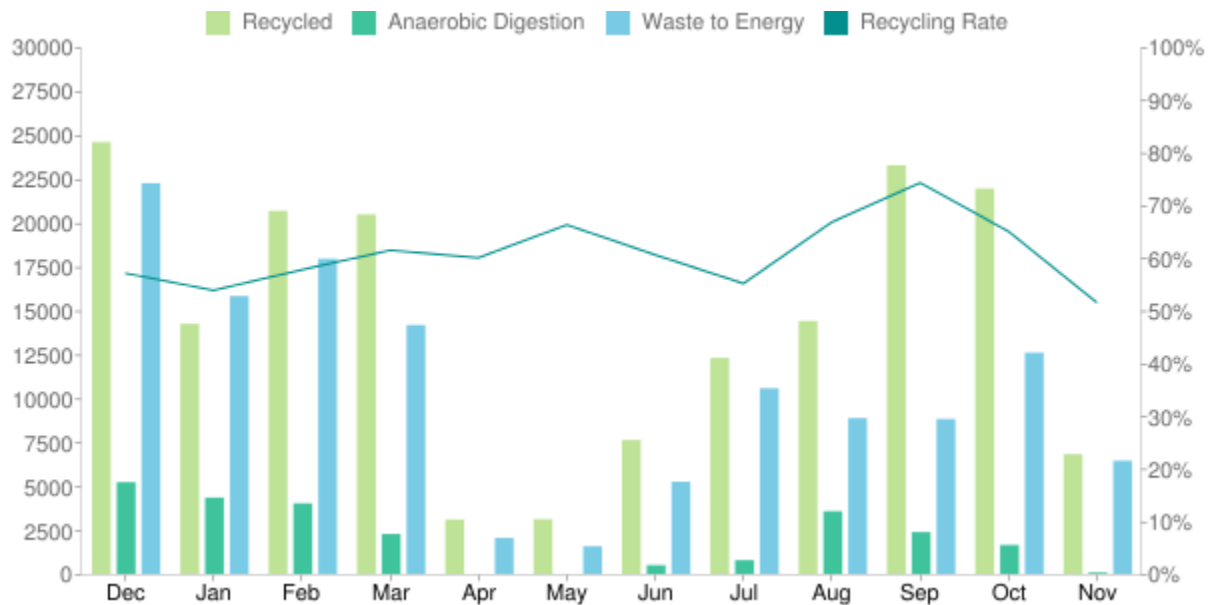


Material collected (kgs)

FROM DECEMBER 2019 TO NOVEMBER 2020



Dec	Jan	Feb	Mar	Apr	May	Jun	Jul	Aug	Sep	Oct	Nov	Total
24,590	14,235	20,675	20,475	3,100	3,119	7,625	12,300	14,405	23,269	21,945	6,820	172,558
5,225	4,350	4,020	2,275	0	0	500	785	3,570	2,382	1,650	80	24,838
22,250	15,825	17,950	14,175	2,050	1,575	5,250	10,575	8,875	8,825	12,600	6,450	126,400
57%	54%	58%	62%	60%	66%	61%	55%	67%	74%	65%	52%	61%

Material recycled

FROM DECEMBER 2019 TO NOVEMBER 2020

CARDBOARD

40,000 kg

JUNK REMOVAL

300 kg

COFFEE GROUNDS

3,062 kg

MIXED RECYCLING

117,650 kg

FOOD RECYCLING

21,775 kg

PAPER SHREDDING

625 kg

GENERAL WASTE

126,200 kg

WEEE AND TONER

25 kg

GLASS

13,920 kg

Key statistics

	THIS MONTH	PAST 12 MONTHS
TREES SAVED:	60	1,325
CO ₂ TONNES SAVED:	10	230
KWH ENERGY PRODUCED:	3,566	82,748
RECYCLING RATE:	52%	61%