



Day time view



View of bridge underside

The existing double bridge is reimagined through the introduction of a perforated metal façade, creating the illusion of a much grander edifice. This contemporary intervention acts as an architectural homage to the historic character of Clapham and its surrounding conservation area, transforming the bridge from purely functional infrastructure into a recognisable landmark and connective threshold along the High Street.

By day, the mesh façade forms a light, elegant veil over the utilitarian iron and brick structure. By night, subtle backlighting allows the mesh to visually dissolve, revealing and celebrating the original historic fabric beneath.

The perforated mesh balances aesthetics, performance, and sustainability. Lightweight in appearance yet robust and durable, it requires minimal maintenance and can be manufactured with high recycled content. Fully recyclable at the end of its lifespan, it generates minimal material waste and is fixed back to a discreet framing structure, ensuring limited intervention to the existing bridge.

Functionality is further enhanced by improvements to pedestrian and cycle routes beneath the bridge. Slightly raised and widened pedestrian and cycle lanes more clearly separate these pathways from vehicular traffic, significantly improving safety and user comfort. At night, kerb-side lighting reinforces visibility to these areas, providing clarity and improved sense of security.



Concept sketch

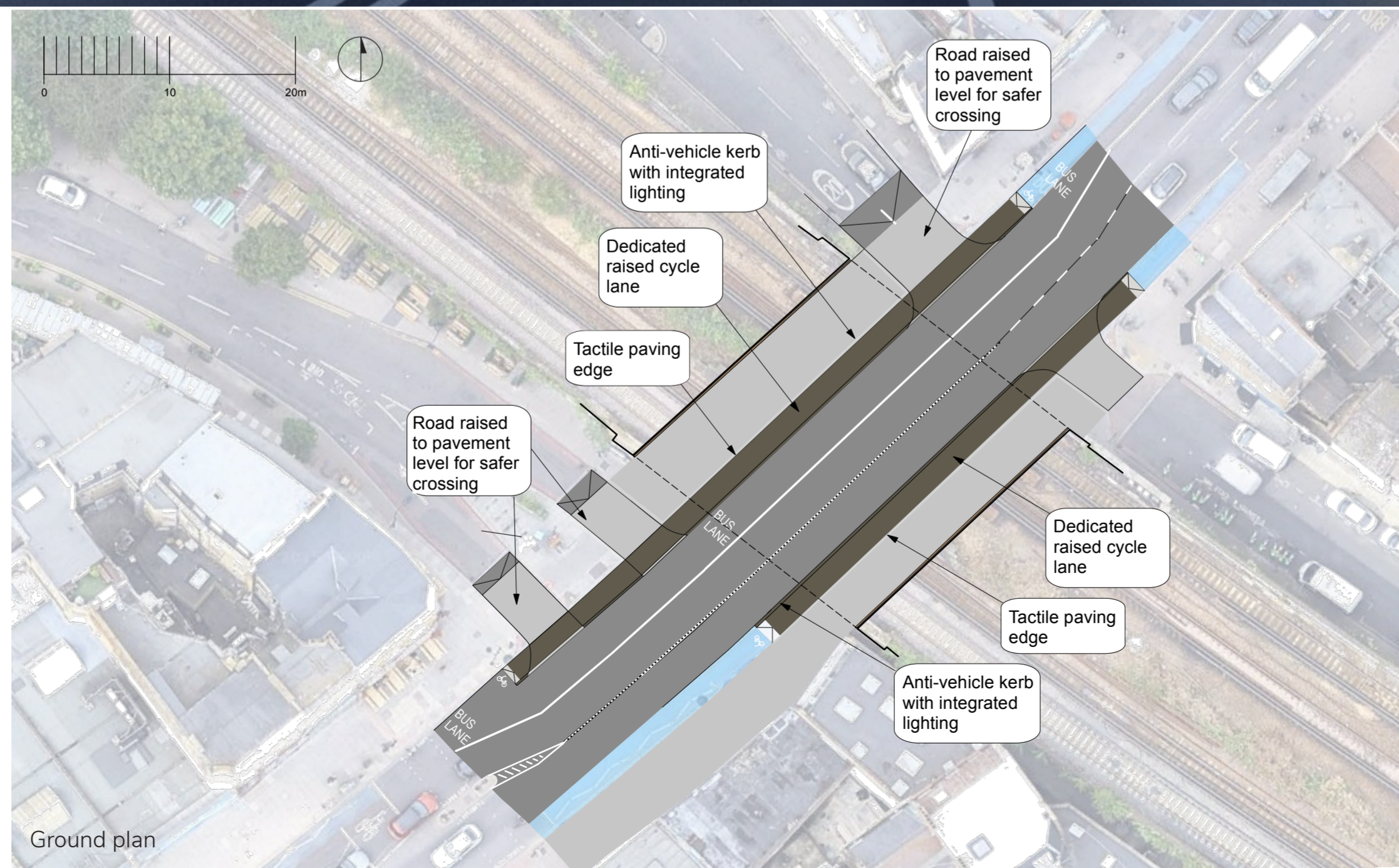


Night time view

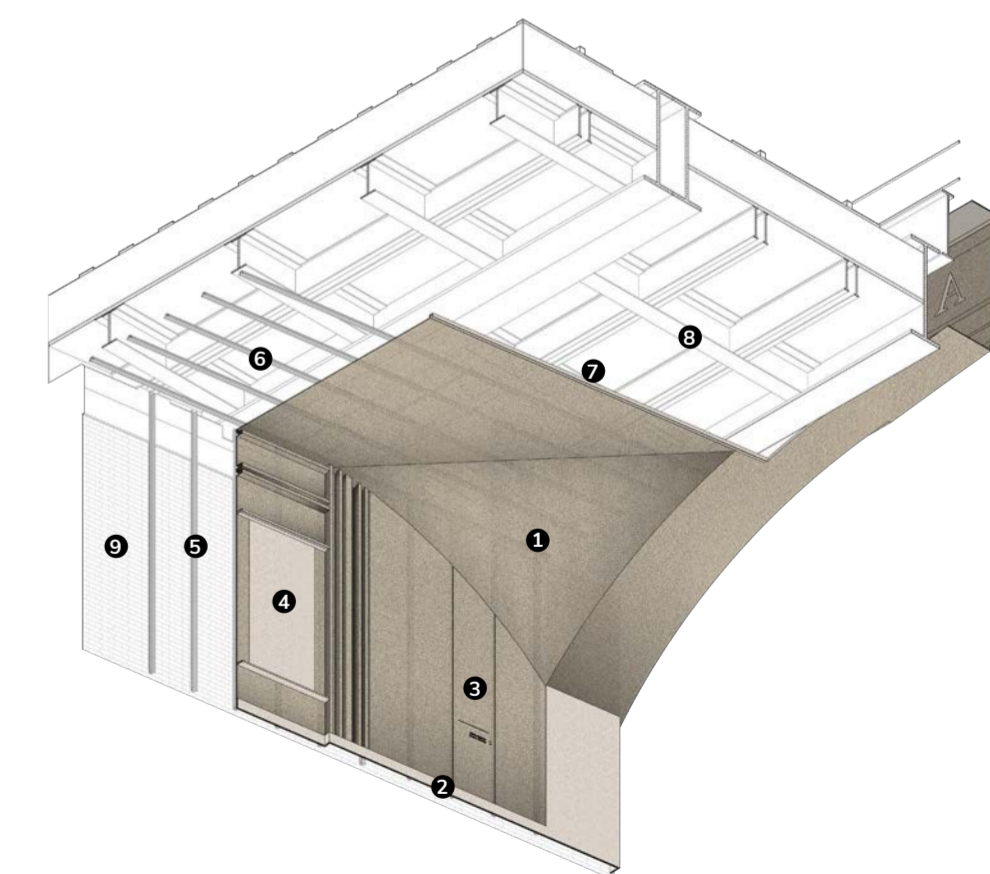
The mesh design is carefully calibrated, with smaller perforations at lower levels to discourage misuse and prevent litter accumulation. Exposed fixings reference the original riveted bridge language while simplifying inspection and maintenance. The porous façade maintains natural light and ventilation, preserving openness and permeability.

Beneath the bridge, the currently residual space is redefined through articulated “street frontage” elements that echo the scale of nearby shopfronts. This activated under-bridge environment provides opportunities for community notices, local art, advertising, and integrated wayfinding. The continuity of the street frontage also serves as a link between the high street to the north and south, better connecting these two sides.

Together, these interventions unify the fragmented structures into a singular architectural statement—celebrating heritage while delivering a robust, sustainable gateway to Clapham.



Ground plan



Construction detail isometric  
1:100 at A2



- 1 Perforated aluminium mesh
- 2 Unperforated base plinth
- 3 Integrated wayfinding sign
- 4 Customizable display board
- 5 Wall cladding subframe
- 6 Soffit cladding subframe
- 7 Bird mesh
- 8 Repainted bridge
- 9 Existing brick