



BEACON & LANDMARK FOR CLAPHAM
ELEGANT & JOYFUL DESIGN



SENSE OF PLACE
LOCAL & CULTURAL ICONS OF CLAPHAM



SAFETY & ACCESSIBILITY
LIGHTING & WAYFINDING



CIVIC ACTIVATION
GREENING & URBAN SEATING



HOMAGE TO RAILWAY ARCHES HERITAGE
CONNECTING THE PAST & PRESENT

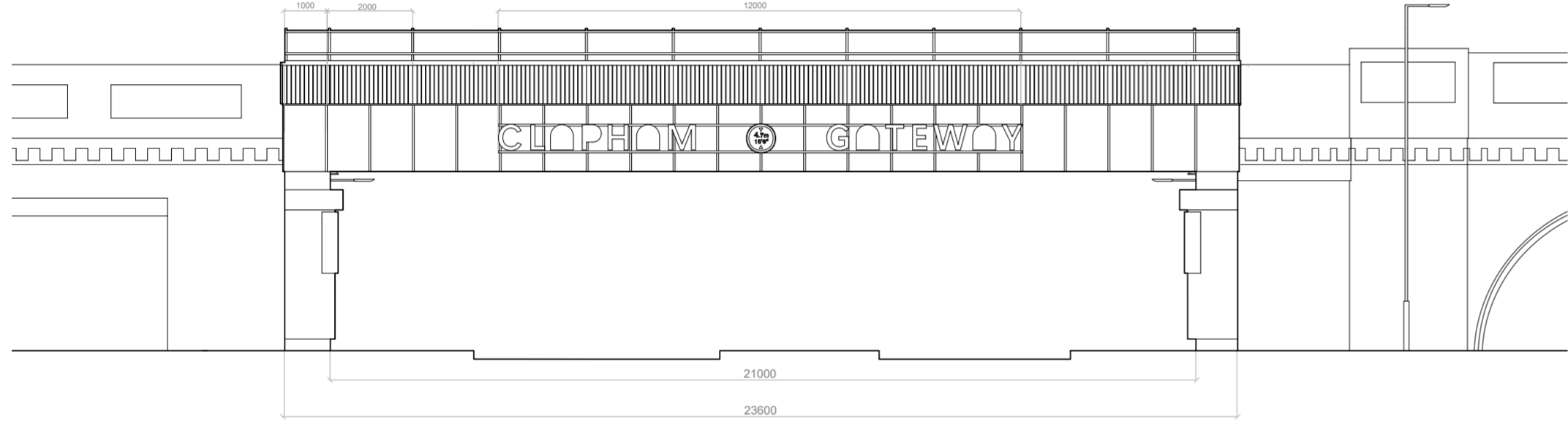
UNDER THE CLAPHAM ARCHES

Once a threshold to rush through, the bridge is reimagined as a living landmark, a place to pause, meet, and belong. It connects Clapham's industrial heritage with its contemporary rhythm, transforming an overlooked underpass into an inviting civic space. Inspired by the geometry of the railway arches, the design celebrates their quiet strength through a warm, joyful and sophisticated reinterpretation. Fluted terracotta panels cast shadows that echo the arches, producing a refined expression that announces the gateway. The colour palette draws on terracotta tones of the existing bridge and local Victorian red brick whilst the sage green is inspired by Clapham Common and oxidised copper fencing, creating a cohesive, locally rooted aesthetic. Thus, the bridge becomes a local landmark through material, colour, and form, encouraging reflection and pride in Clapham's evolving identity while honouring its history.

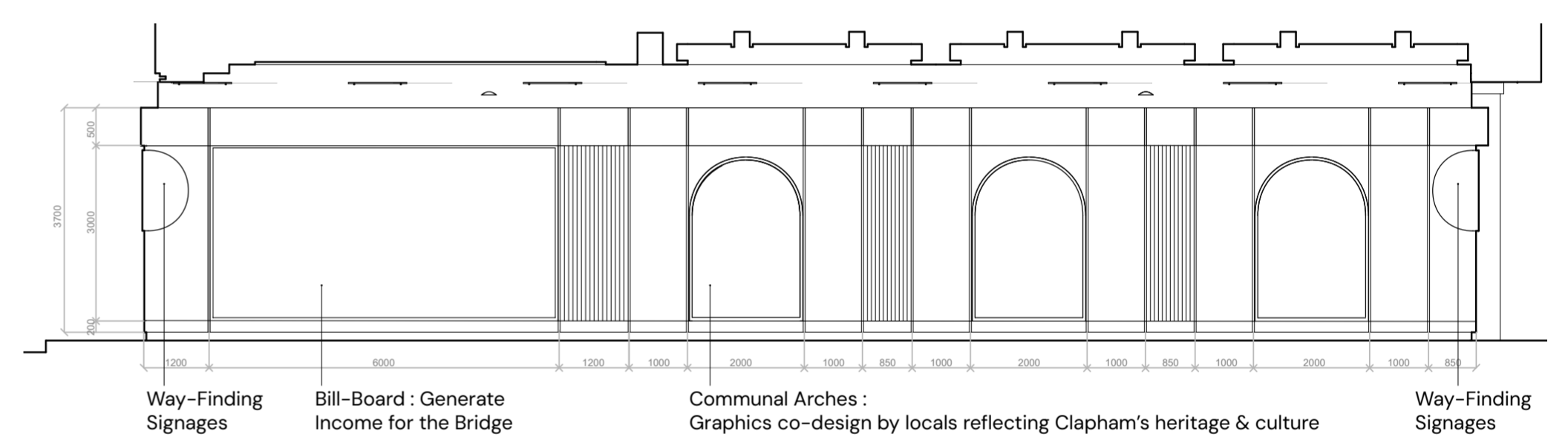
Under the bridge, the classical and contemporary arch panels tell stories through the interplay of form, texture, and shadow, featuring community-designed silhouettes of Clapham's iconic buildings including the Common Bandstand and Clapham North Station Dome, creating a narrative of Clapham's past and present. These modular panels alongside the billboards help support local messaging and generate community revenue. Furthermore, planting strategies enhance sensory qualities and biodiversity. Lavender references Lavender Hill, adding scent and reinforcing a sense of place, while the benches echo arch forms and extend the design into the surrounding urban fabric, inviting pauses and interaction. Playful arches encourage engagement from all users, including families and children, making the space inclusive. Soft, coloured lighting ensures the underpass feels welcoming day and night, highlighting reliefs and artworks that celebrate local landmarks and creating a safe environment for the community. More than a crossing, this bridge becomes a gateway to Clapham — one that honours its past, engages its present, and looks confidently toward the future.



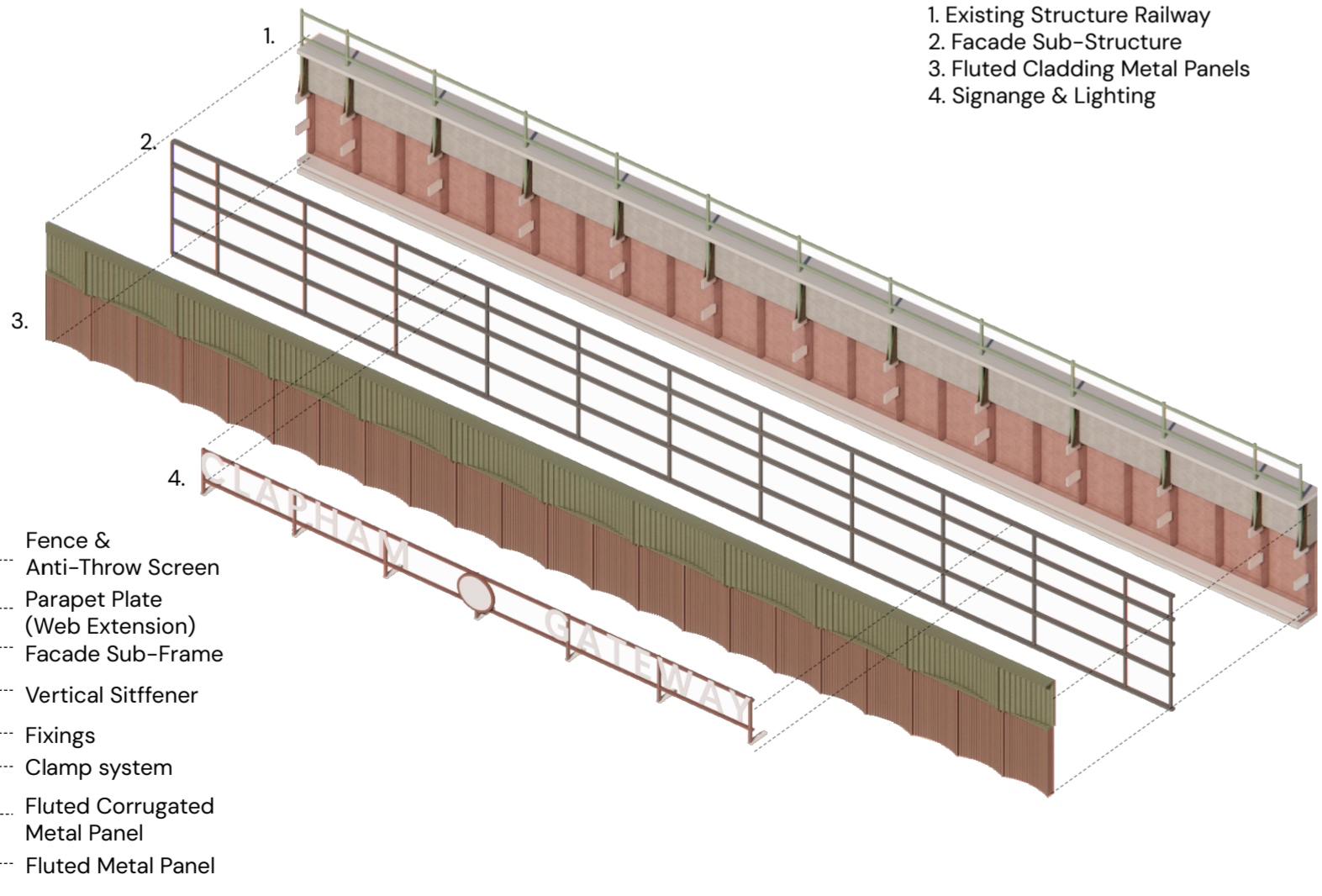
North Elevation



West Elevation



- Colour Scheme**
- VICTORIAN RED BRICK TERRACOTTA
HOMAGE TO PAST & EXISTING BRIDGE
 - CLAPHAM COMMON SAGE GREEN
EXISTING GREENERY & OXIDISED COPPER

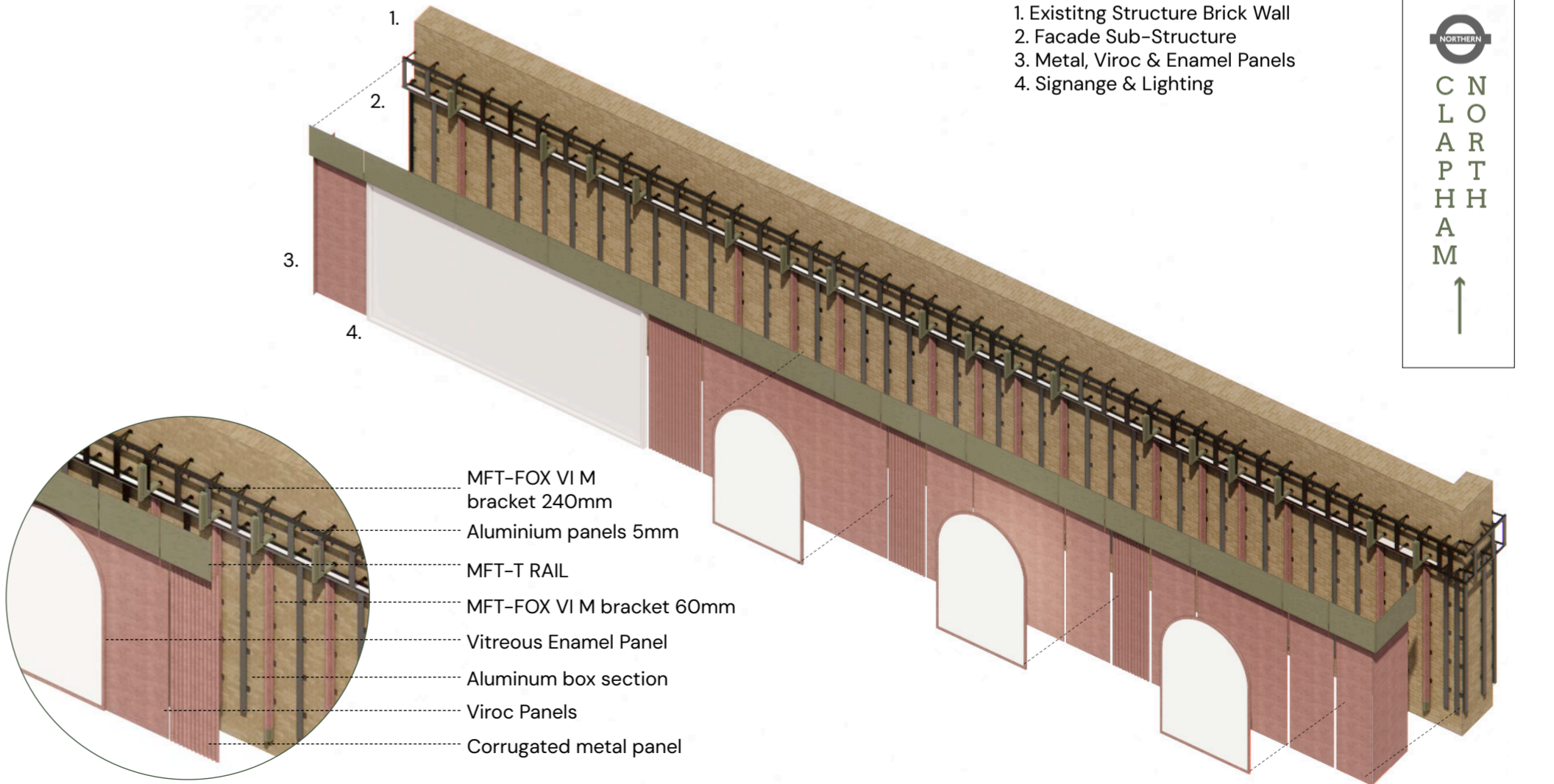


Isometric Zoom In Detail

- Fence & Anti-Throw Screen
- Parapet Plate (Web Extension)
- Facade Sub-Frame
- Vertical Stiffener
- Fixings
- Clamp system
- Fluted Corrugated Metal Panel
- Fluted Metal Panel

- Existing Structure Railway
- Facade Sub-Structure
- Fluted Cladding Metal Panels
- Signage & Lighting

Exploded Isometric of North & South Elevation Facade Build-Up



Isometric Zoom In Detail

- MFT-FOX VI M bracket 240mm
- Aluminium panels 5mm
- MFT-T RAIL
- MFT-FOX VI M bracket 60mm
- Vitreous Enamel Panel
- Aluminum box section
- Viroc Panels
- Corrugated metal panel

- Existing Structure Brick Wall
- Facade Sub-Structure
- Metal, Viroc & Enamel Panels
- Signage & Lighting



Exploded Isometric of East & West Elevation Facade Build-Up